

Peel Compton
FOUNDATION

Impact Report

Fiscal Year

2024





A Message from the Executive Director

2024 has been a year of unexpected challenges and steadfast resilience for the Peel Compton Foundation's four community spaces. As we look to the future, our commitment to serving Northwest Arkansas remains unwavering. Guided by our mission, we work to connect the community through free access to nature, education, recreation, and preservation in spaces designed to be inclusive, sustainable, and supportive of wellness.



We began the year with vibrant celebrations at Osage Park After Dark, the Noon2Moon Mountain Bike Race, the Wetland and Woodland Expedition Field Trips, and achieving accreditation at the Peel Museum & Botanical Garden by the American Alliance of Museums ahead of the Peel Museum's 150th Anniversary Celebration. These accomplishments embody our vision of bringing people together in meaningful, dynamic ways.

In May, severe tornados swept through our cherished gardens and parks. The devastation was heartbreaking, but it strengthened our resolve to restore and revitalize these treasured community spaces.

Despite the challenges, we concluded the year on a high note. Over 1,300 fourth graders experienced hands-on learning at the Peel Museum & Botanical Garden during our School Days Field Trips, we sold more than 8,000 native trees and plants at Dr. Compton's Native Tree & Plant Sales, hosted numerous community events at Osage Park, and welcomed the USA Collegiate Cycling National Championships to Coler Mountain Bike Preserve. These gatherings, along with countless other community-engagement opportunities, ensure that the spaces that make Northwest Arkansas home remain free, accessible, and beautiful for everyone, every day, all year.

As you explore the impact in the pages ahead, we invite you to celebrate alongside us. The Peel Compton Foundation's work is made possible through the dedication of our volunteers, community partners, donors, sponsors, and staff. Together, we create lasting impact.

With gratitude,

A handwritten signature in black ink that reads "Debra K. Layton". The signature is written in a fluid, cursive style.

Debra K. Layton
Executive Director



Our Mission

The Peel Compton Foundation connects the community through nature, education, recreation and preservation.

Board of Directors

Lynne Walton

President

Jacob McElroy

Vice President, Mitchell Williams Law Firm

Melanie Belford

Treasurer, Walmart

Angelique O'Bryan

Secretary, The Payroll Company

Angie Garrett

Arvest

Ken Leonard

Master Naturalist

Javier Zavala

Ripple Junction Design Co.

Mary Zettle

General Mills, Retired

Tom Alderson

Walmart

Joe Allbright

Walmart

Sarah Dewitt

Bentonville Public Schools

Bruce Gillispie

Better Homes and Gardens Real Estate

Brian Baldwin

Kingsford Products, Retired

Michelle Van Schenck

Arvest



Peel Museum & Botanical Garden

The Peel Museum & Botanical Garden achieved accreditation by the **American Alliance of Museums (AAM) ahead of the Peel Museum's 150th Anniversary Celebration in 2025.** This accreditation is the highest national recognition afforded to the nation's museums. Accreditation signifies excellence to the museum community, governments, funders, outside agencies, and to the museum-going public.



11,800+

Visitors welcomed at the Peel Museum & Botanical Garden



6,000+

Guests celebrated life events hosted at the Peel Museum's event spaces



1,500+

School Days & Education Program Participants explored Arkansas history

2024 was the 20th Anniversary of School Days Field Trips at the Peel Museum & Botanical Garden

A large red tulip is in sharp focus in the foreground. Behind it, a field of other tulips in various colors (red, orange, yellow) and green foliage is visible. In the background, a brick building with a white arched window is partially visible under a clear blue sky.

Stunning!

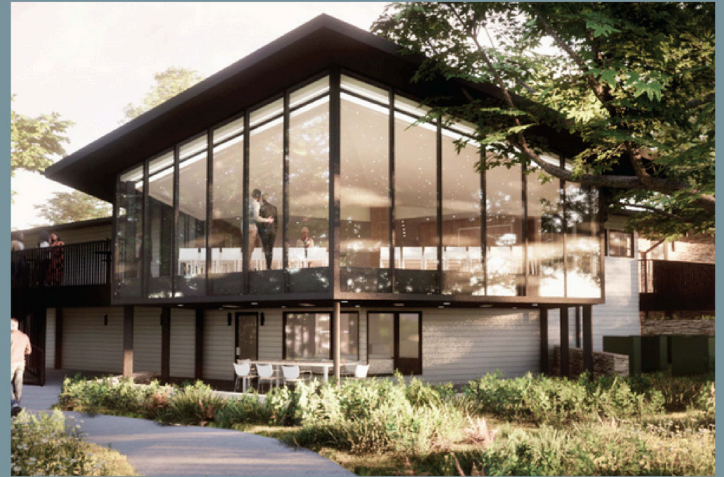
“The grounds and gardens are stunning, showcasing meticulous care. The house and its artifacts are beautifully displayed and well-maintained. The tour is highly informative, providing an excellent snapshot of the Peel family's life at the mansion in the late 1800s.”

Andrew S.
TripAdvisor Review



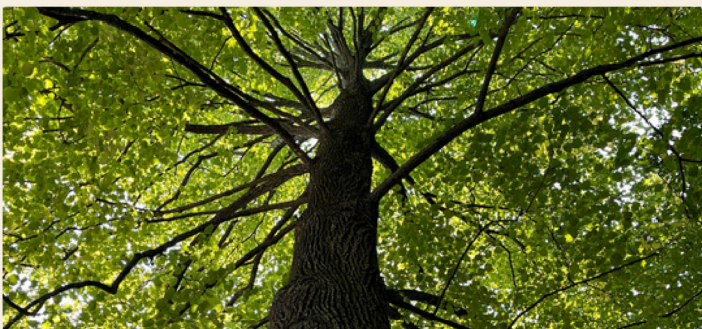
Compton Gardens & Arboretum

The Peel Compton Foundation began the renovation of the Compton Gardens and Arboretum family home of Dr. Neil Compton in June 2024, to better serve the Northwest Arkansas community. The estimated yearlong project will preserve the historic exterior of the mid-century modern house that was once home to renowned doctor, photographer, and conservationist Neil Compton.



450,500+

Visitors to the Compton Greenway & All American Trail



8,700+

Trees Planted or Donated to Northwest Arkansas through the Foresting the Future Program



8,000+

Native trees & plants sold at the Dr. Compton Native Tree & Plant Sales

A Haven Right by the Square

“A nice shady walk with seating. Beautiful greens, bridges, hydrangeas, cone flowers, trees, etc. with many labeled. Just an enjoyable area to visit and mosey through.”

Alison B.
Google Review

Red Cardinal Flower



Coler Mountain Bike Preserve

The 2024 USA Cycling Collegiate Mountain Bike National Championships were held at Coler Mountain Bike Preserve on November 14-17, drawing over 900 student-athletes and staff, along with countless fans to our renowned cycling destination.



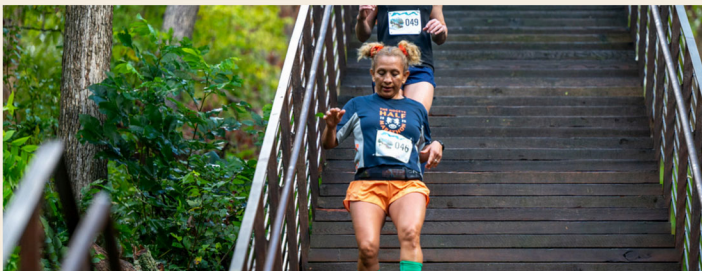
500,000+

Visitors at Coler Mountain Bike Preserve



4,500+

Recreation & Nature Program Participants



18,700+

Miles climbed on The Rise



4,400+

Campground reservations booked



Truly a Mountain Bikers Paradise

“This place is amazing for mountain bikers, but we fell in love with the beauty and the people. Even though a horrible storm tore up hundreds of trees and trails, everyone has worked so hard to have this place usable. The staff at Coler have really outdone themselves with a great location. Super clean and a must stay whenever you’re in Bentonville and want to do some mountain biking.”

Brent C.

TripAdvisor Review



Osage Park

The Peel Compton Maintenance Team at Osage Park won the Arkansas Recreation & Parks Association (ARPA) Maintenance Team of the Year award. Selected by a committee and announced at the annual ARPA conference, this new award recognizes a maintenance or professional team that significantly impacts the daily operations of Parks and Recreation facilities across the state.



1,300+

Pounds of trash removed from the Wetland



1,200+

Educational Program Participants enjoyed field trips at Osage Park



200+

Community volunteer hours contributed



1,100+

Trees & shrubs planted to replace invasive plants at Osage Park

A field of purple coneflowers with dark brown centers, growing on green stems. The background is a soft-focus green field. A semi-transparent, rounded rectangular text box is overlaid in the center of the image.

A Special Place

“Love the trails at this park. Feels like you are further out and not right in town. Very peaceful, beautiful & well maintained. I always love the wildlife that I see.”

Maria L.
TripAdvisor Review



The Quiver Archery Range

The Quiver Archery Range is set to host and organize the inaugural Shoot Around Arkansas Tournament (SAAT) in 2025. This exciting multi-field archery competition will take place across the state of Arkansas from April 1 to May 31, showcasing the sport's growing popularity and competitive spirit. By spearheading this statewide event, the Quiver will establish itself as a premier destination for archery enthusiasts in the region, further solidifying its reputation as a leader in the sport.



11,000+

Visitors welcomed at the Quiver Archery Range



500+

Community Day participants



500+

Quiver Members



800+

Team Builder & Private Rental participants joined us at the range

A photograph of two young boys practicing archery. The boy in the foreground is wearing a blue t-shirt and grey shorts, holding a pink bow and a green arrow, ready to shoot. The boy in the background is wearing a red t-shirt and grey shorts, also holding a bow. They are standing on a paved area with colorful cylindrical markers (red and green) in front of them. In the background, there are several archery targets on a grassy field under a clear blue sky.

Loved this place!

“It was easy to reserve a time and it was reasonably priced. This is a great activity to do with family, friends, or solo! The staff was great and they offered great instructions that were easy to follow. “

A. Mitchell
Google Review

150 YEARS



PEEL MUSEUM & BOTANICAL GARDEN

WE ARE CELEBRATING

In 2025, the Peel Compton Foundation will celebrate the **150th anniversary of the Peel Museum & Botanical Garden**. Built in 1875, the Peel Museum is a treasured Bentonville landmark and one of the town's oldest structures.

SPECIAL EVENTS IN 2025

June 1 - Picnic on the South Lawn

September 9-12 - School Days

December 5 - Christmas at the Peel Museum



Scan the QR code to learn more about supporting the Peel Compton Foundation and joining us in celebrating this significant milestone.



Contact Us



 **Phone**

479-254-3870

 **Address**

312 N. Main Street
Bentonville, AR 72712

 **Email**

kayla.lacavera@peelcompton.org

 **Website**

www.peelcompton.org

Peel Compton

FOUNDATION

